



TRIVEST

261-265 CHALMERS STREET REDFERN




TRIVEST

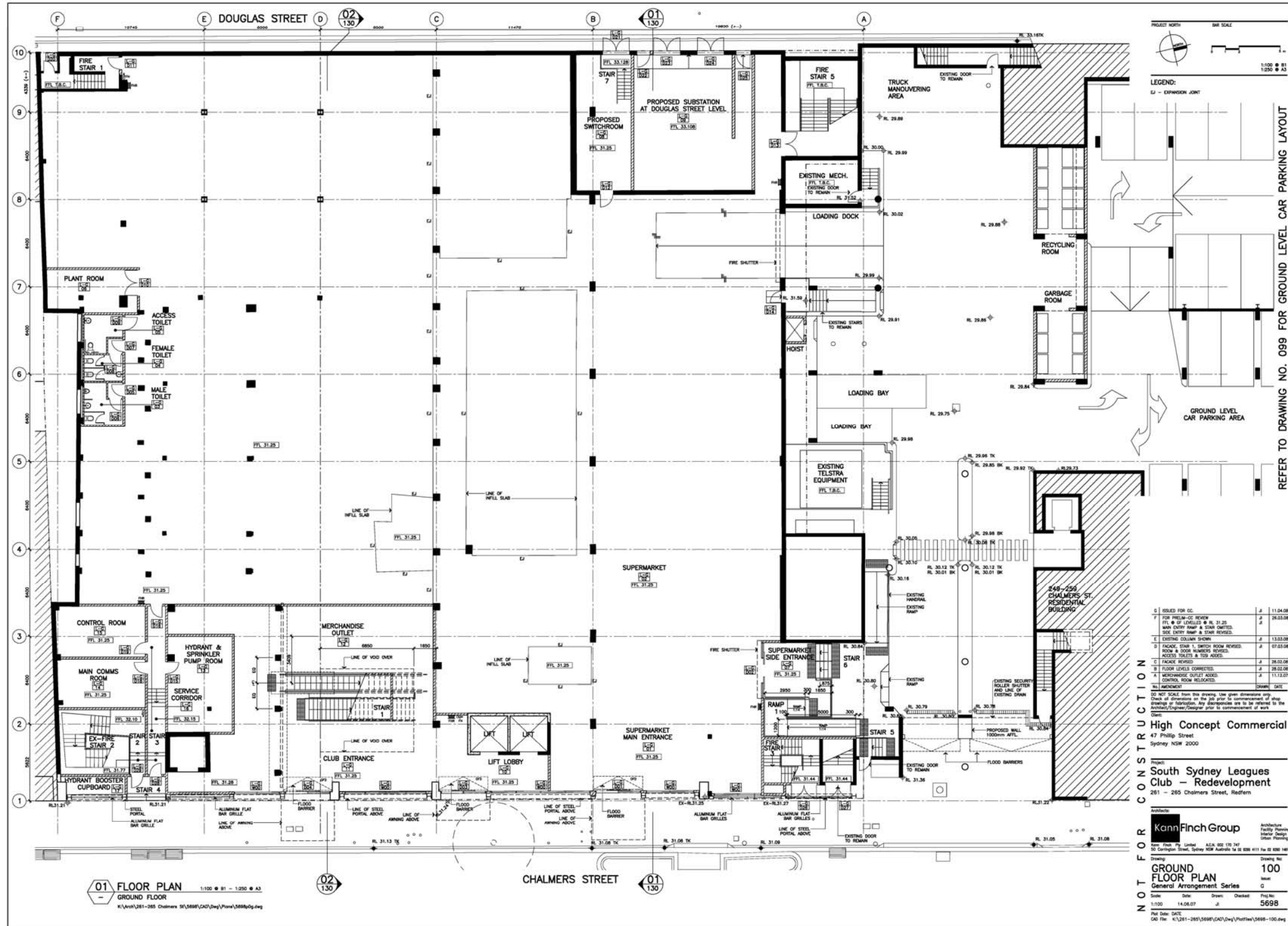



TRIVEST



Image © 2008 Sinclair Knight Merz
© 2008 TrueLocal



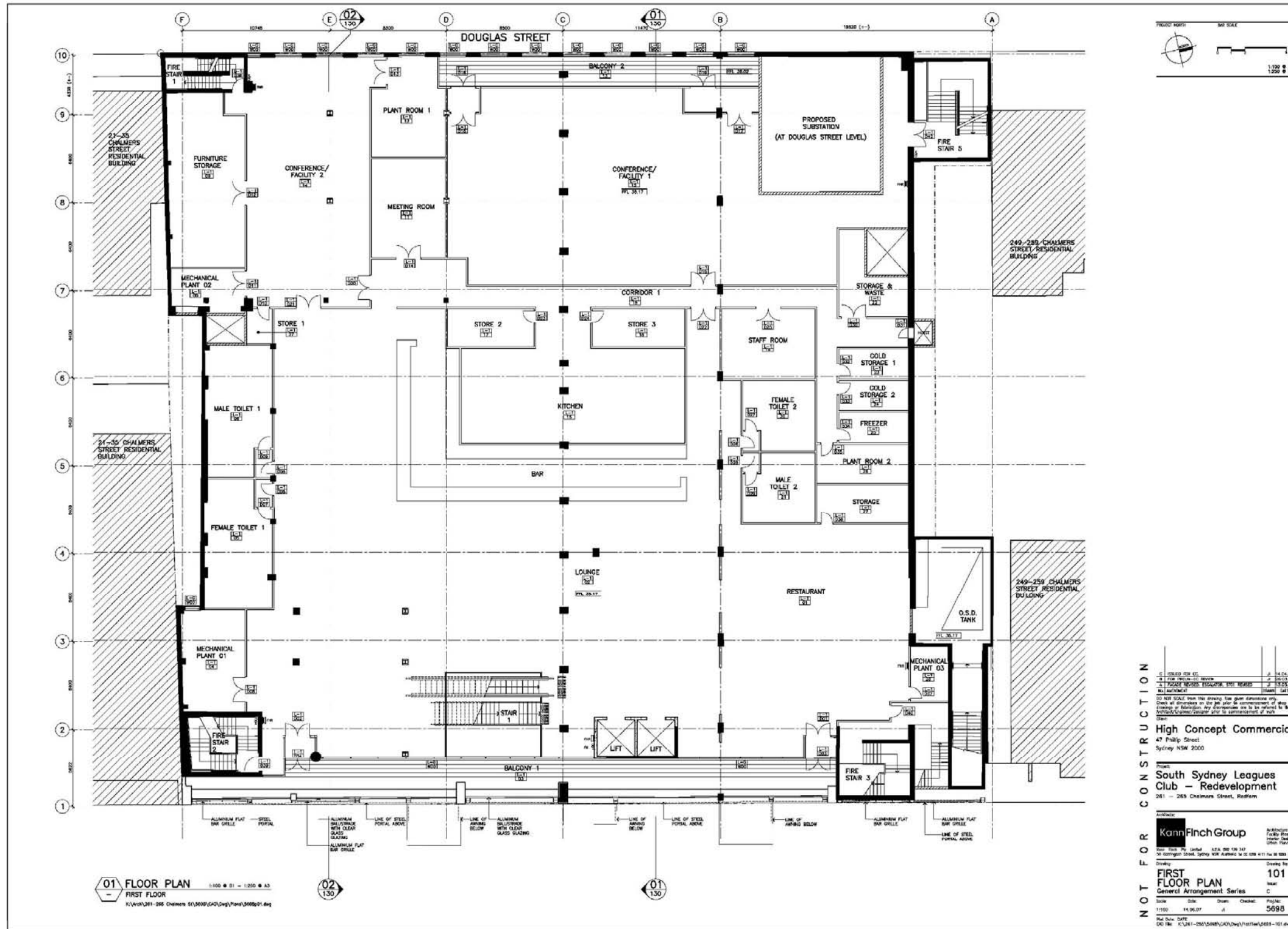


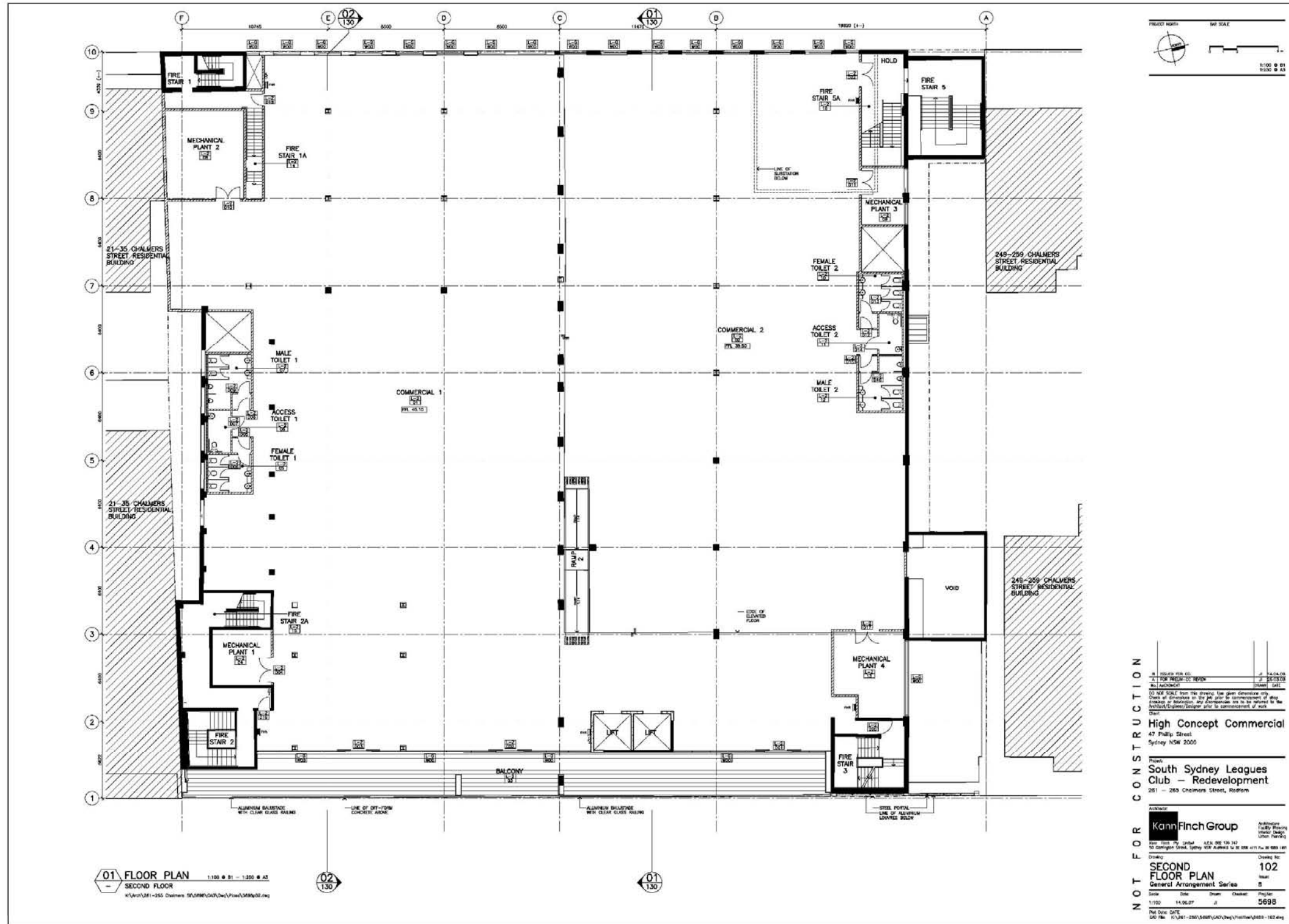
REFER TO DRAWING NO. 099 FOR GROUND LEVEL CAR PARKING LAYOUT

NO.	DESCRIPTION	DATE
1	ISSUED FOR CC	11.04.08
2	FOR PRELIM CC REVIEW	28.03.08
3	REVISED ENTRY STAIR & STAIR OUTLET	28.03.08
4	REVISED ENTRY STAIR & STAIR OUTLET	28.03.08
5	EXISTING COLUMN SHOWN	13.03.08
6	EXISTING COLUMN SHOWN	13.03.08
7	FACIAL STAIR 1 SERVICE ROOM REVISED	07.03.08
8	ROOM & DOOR NUMBERS REVISED	28.02.08
9	FLOOR LEVELS CORRECTED	28.02.08
10	MECHANICAL OUTLET ROOMS	11.12.07
11	CONTROL ROOM RELOCATED	11.12.07

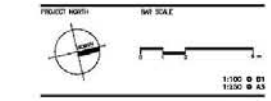
Architect		Kann Finch Group		Architectural Facility Planning Interior Design Urban Planning	
Level: 01		Drawing No: 100		Sheet: 0	
Title: GROUND FLOOR PLAN		Series: General Arrangement Series		Scale: 1:100	
Date: 14.06.07		Drawn: J		Checked: J	
Project No: 5698		Date: 14.06.07		Project No: 5698	







01 FLOOR PLAN
 SECOND FLOOR
 1:100 # B1 - 1:200 # A2
 K:\Arch\101-285 Chalmers\101\101\101\101\101\101.dwg



NOT FOR CONSTRUCTION

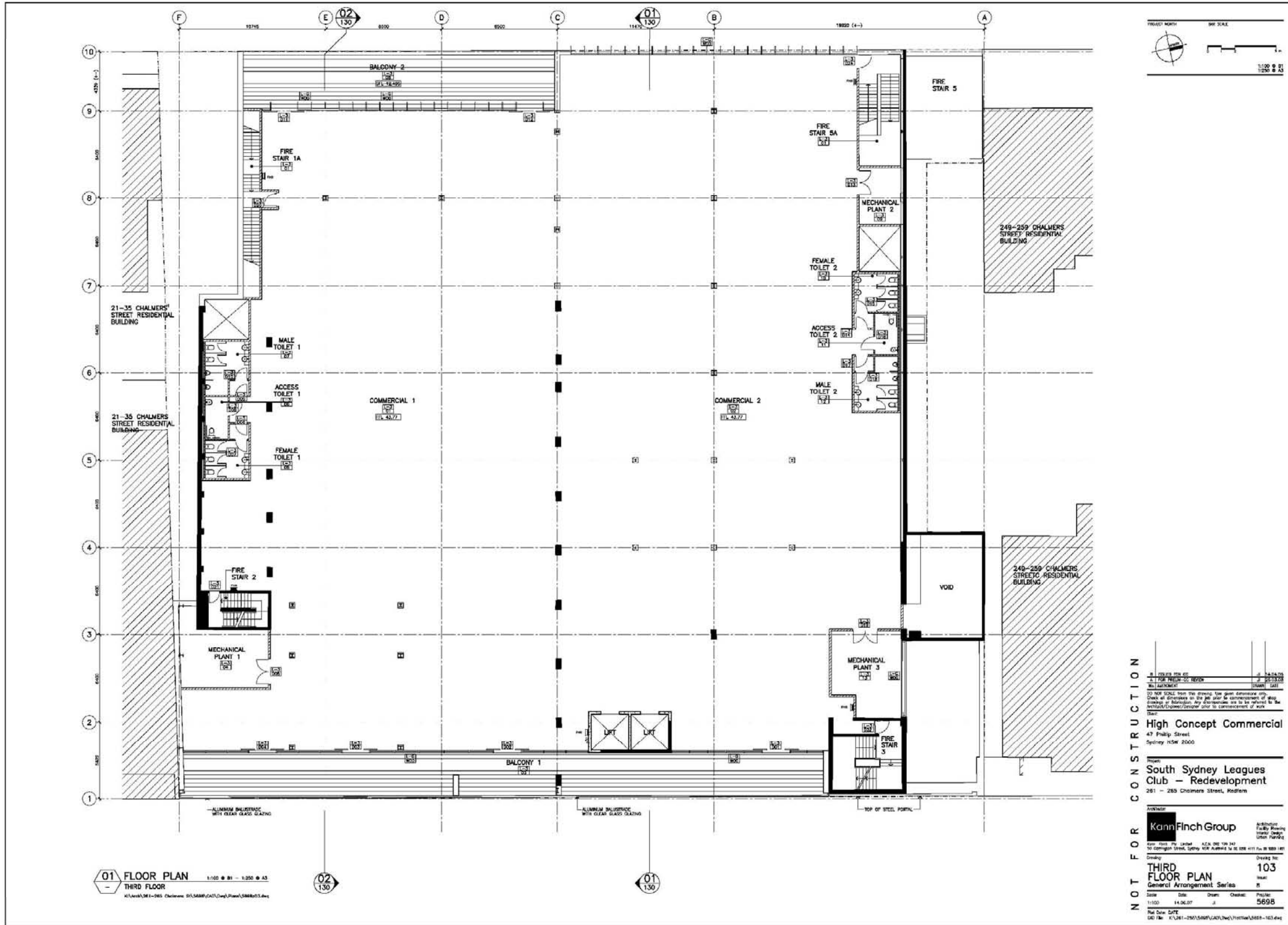
DATE	BY	CHKD	APPD
14.06.27	JL		

High Concept Commercial
 47 Phillip Street
 Sydney NSW 2000

From
 South Sydney Leagues Club - Redevelopment
 281 - 285 Chalmers Street, Redfern

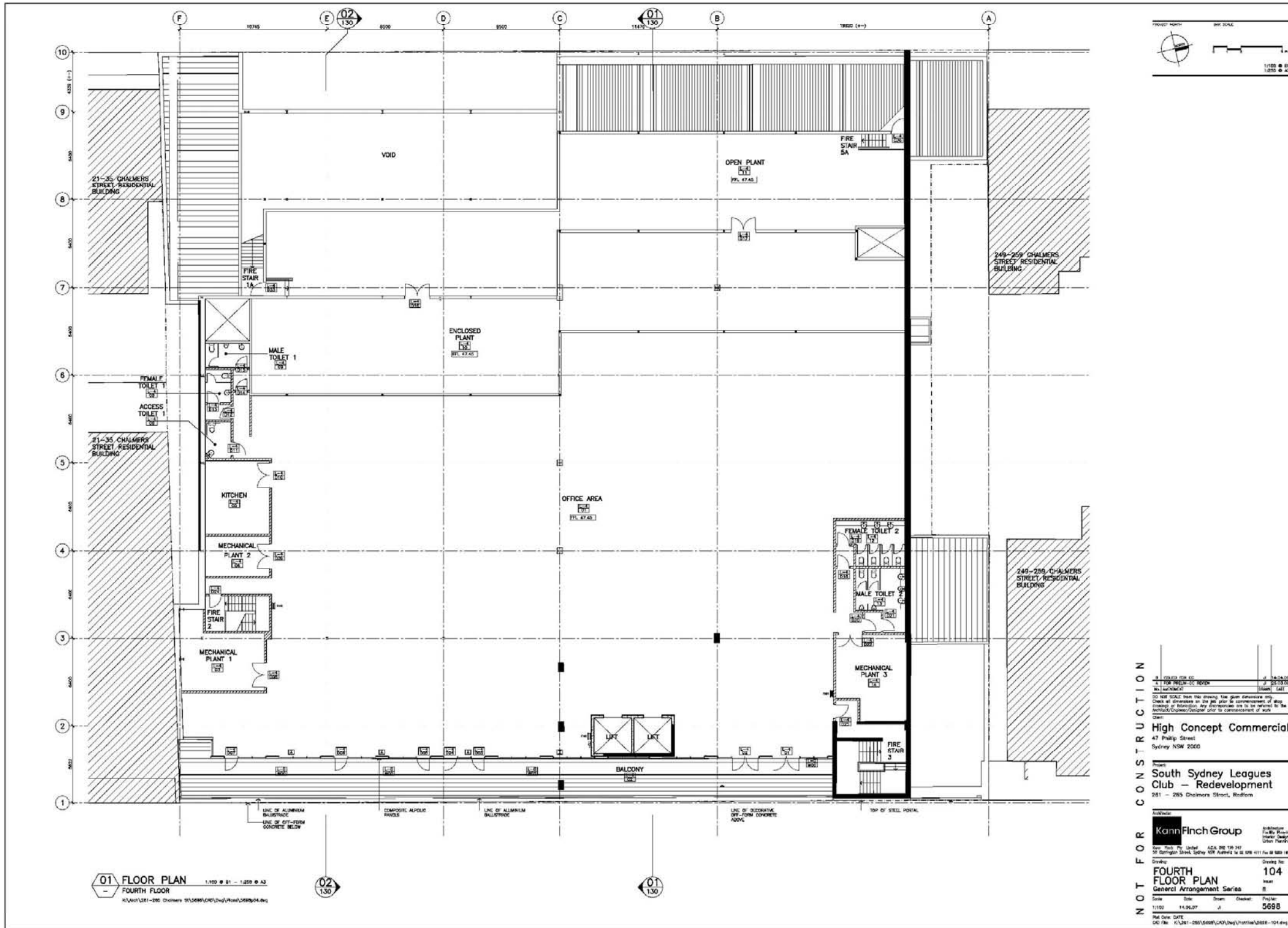
KannFinch Group
 102
 General Arrangement Series





CONSTRUCTION
 High Concept Commercial
 47 Phillip Street
 Sydney NSW 2000
 South Sydney Leagues Club - Redevelopment
 281 - 283 Chalmers Street, Redfern
KannFinch Group
 11/100 Phillip Street
 Sydney NSW 2000
THIRD FLOOR PLAN
 General Arrangement Series
 103
 5698





NOT FOR CONSTRUCTION

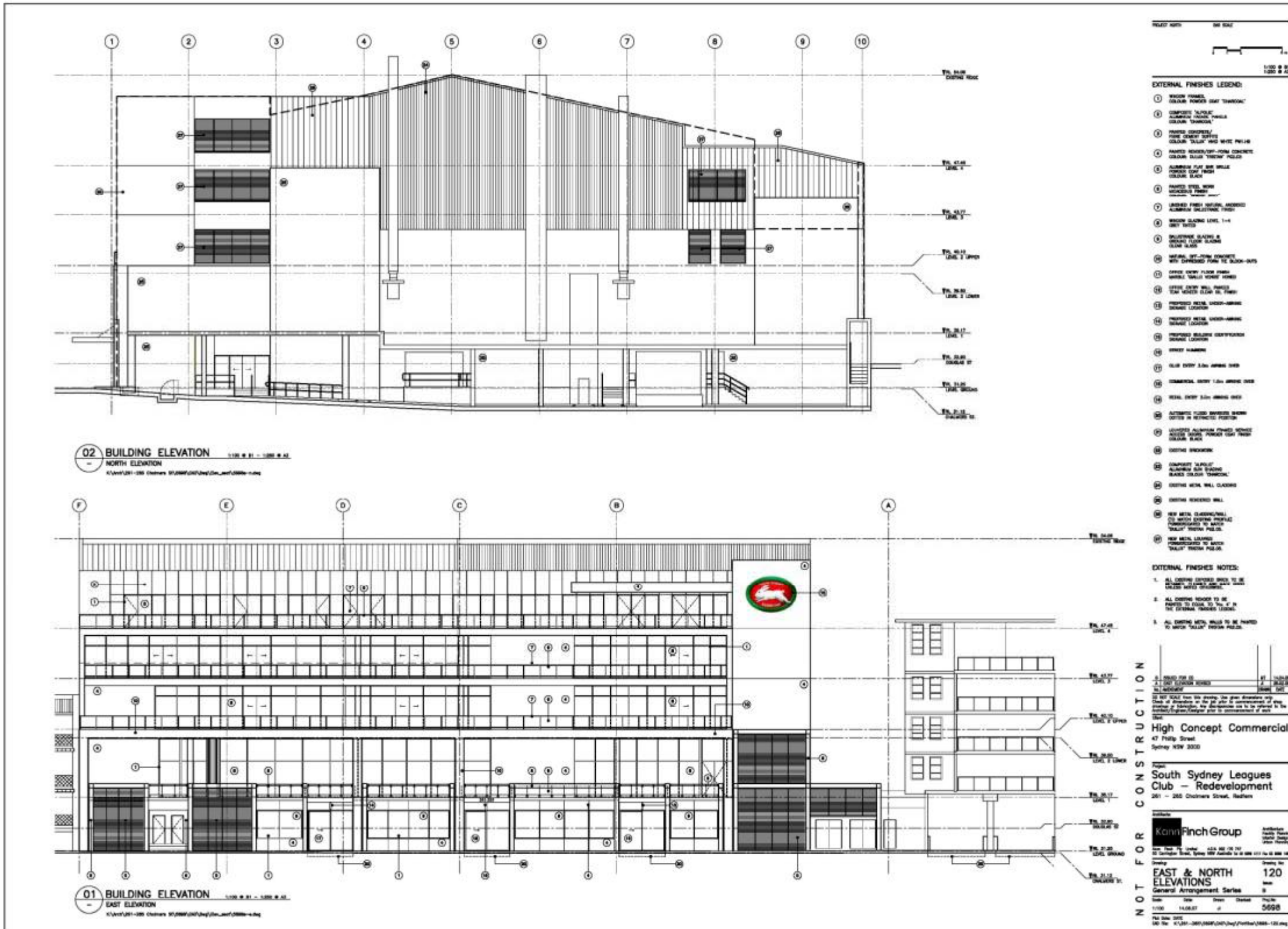
High Concept Commercial
 47 Philip Street
 Sydney NSW 2000

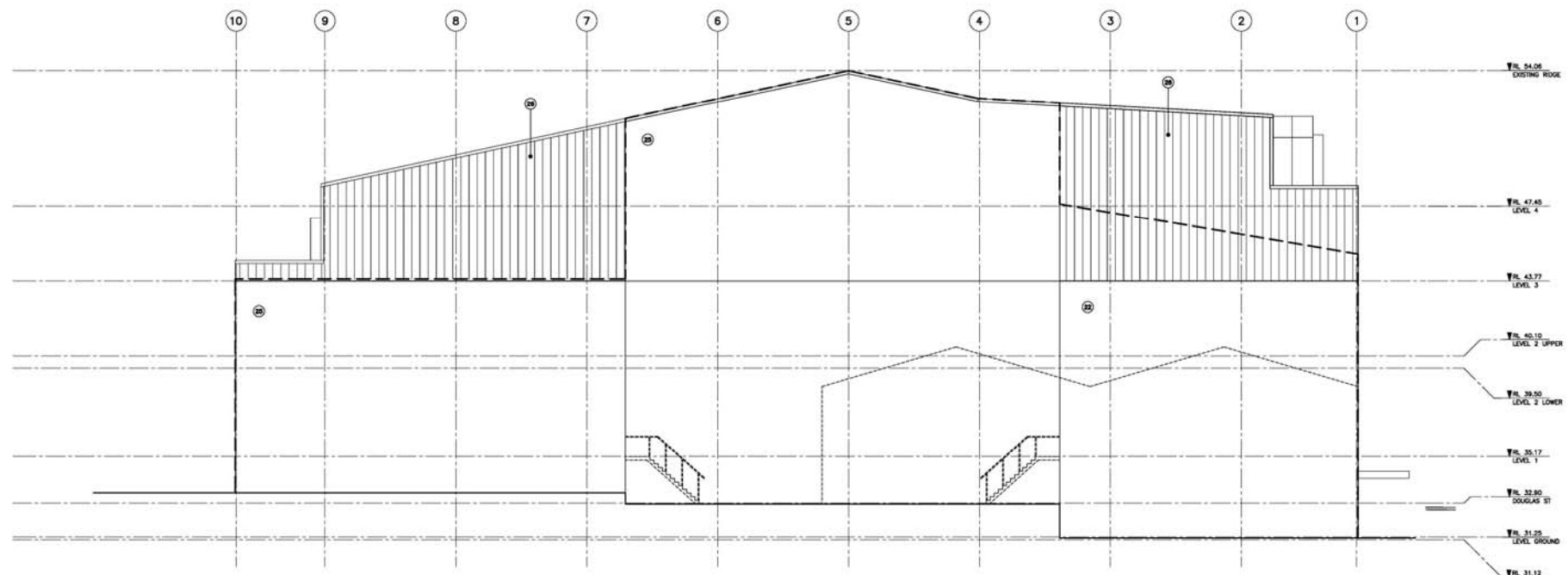
South Sydney Leagues Club - Redevelopment
 261 - 265 Chalmers Street, Redfern

Kenn Finch Group
 25 Durrington Street, Sydney NSW Australia
 Tel: 61 61 9551 1111 Fax: 61 61 9551 1111

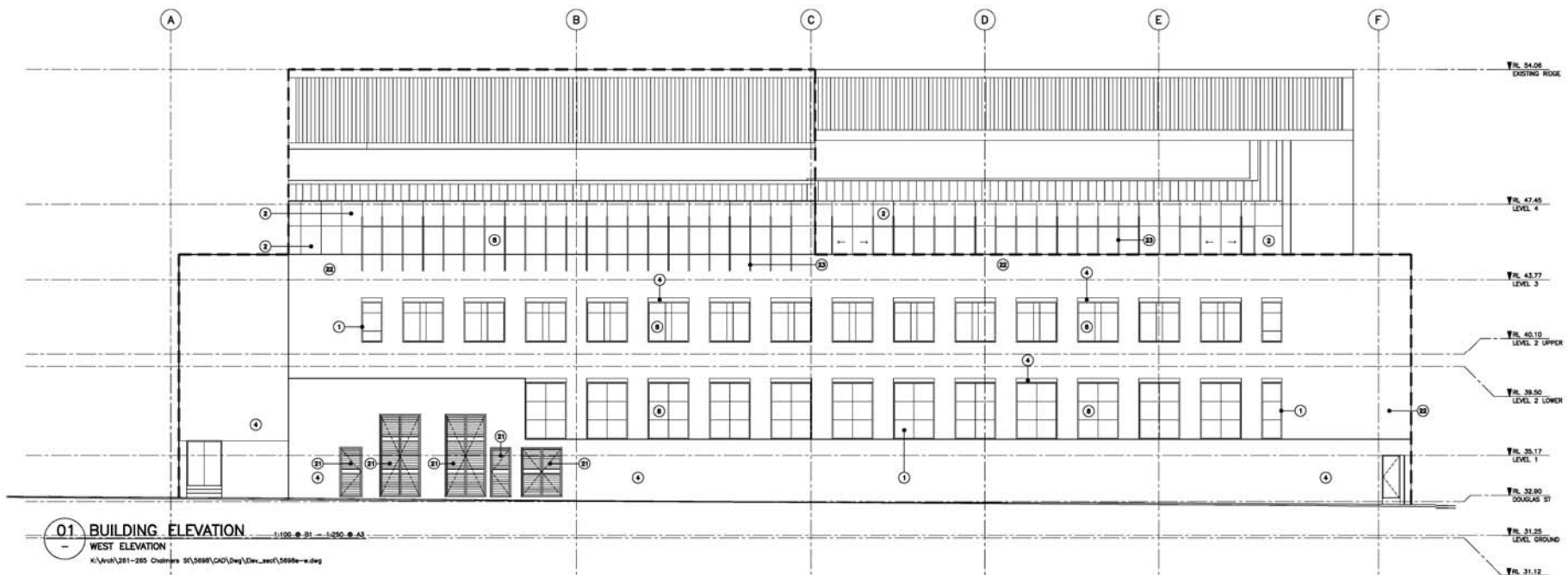
Project: 104
 Drawing No: 104
 Scale: 1:100
 Date: 14.06.07
 Sheet: 5688



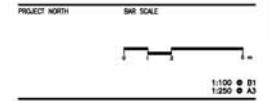




02 BUILDING ELEVATION
 SOUTH ELEVATION
 1:100 @ B1 - 1:250 @ A3
 K:\Arch\261-265 Chalmers St\5698\CAD\Day\Rev\rev\5698-s.dwg



01 BUILDING ELEVATION
 WEST ELEVATION
 1:100 @ B1 - 1:250 @ A3
 K:\Arch\261-265 Chalmers St\5698\CAD\Day\Rev\rev\5698-s.dwg



- EXTERNAL FINISHES LEGEND:**
- ① WINDOW FRAMES
COLOUR: POWDER COAT 'CHARCOAL'
 - ② COMPOSITE 'ALPOLIC' ALUMINIUM FRAMED PANELS
COLOUR: 'CHARCOAL'
 - ③ PAINTED CONCRETE / FINE CONCRETE SURFACES
COLOUR: 'DALLIX' WIND WHITE PW1-HB
 - ④ PAINTED RENDER/OFF-FORM CONCRETE
COLOUR: 'DALLIX' TRESTLE POLICE
 - ⑤ ALUMINIUM FLAT BAR GRILLE
POWDER COAT FINISH
COLOUR: BLACK
 - ⑥ PAINTED STEEL WORK
MAGNOLIA FINISH
COLOUR: 'SHIRAZ GREY'
 - ⑦ UNFINISHED FINISH NATURAL ANODISED ALUMINIUM BALUSTRADE FINISH
 - ⑧ WINDOW GLAZING LEVEL 1-4
GREY TINTED
 - ⑨ BALUSTRADE GLAZING & GROUND FLOOR GLAZING
CLEAR GLAZING
 - ⑩ NATURAL OFF-FORM CONCRETE WITH EXPRESSED FORM TIE BLOCK-OUTS
 - ⑪ OFFICE ENTRY FLOOR FINISH
MARBLE 'DALLIX VENUS' HONED
 - ⑫ OFFICE ENTRY WALL PANELS
TONE MIMICK CLEAR OIL FINISH
 - ⑬ PROPOSED METAL UNDER-ARMING SIGNAGE LOCATION
 - ⑭ PROPOSED METAL UNDER-ARMING SIGNAGE LOCATION
 - ⑮ PROPOSED BUILDING IDENTIFICATION SIGNAGE LOCATION
 - ⑯ STREET NUMBERS
 - ⑰ CLUB ENTRY 3.0m ARMING OVER
 - ⑱ COMMERCIAL ENTRY 1.5m ARMING OVER
 - ⑲ METAL ENTRY 3.0m ARMING OVER
 - ⑳ AUTOMATIC FLOOD BARRIERS SHOWN DOTTED IN RETRACTED POSITION
 - ㉑ LOANED ALUMINIUM FRAMED SERVICE ACCESS DOORS, POWDER COAT FINISH
COLOUR: BLACK
 - ㉒ EXISTING BRICKWORK
 - ㉓ COMPOSITE 'ALPOLIC' ALUMINIUM SIGN GLAZING
BLACKS COLOUR 'CHARCOAL'
 - ㉔ EXISTING METAL WALL GLAZING
 - ㉕ EXISTING RENDERED WALL
 - ㉖ NEW METAL CLADDING/WALL TO MATCH EXISTING PROFILE
POWDERCOATED TO MATCH 'DALLIX' TRESTLE POLICE
 - ㉗ NEW METAL LOUVRES
POWDERCOATED TO MATCH 'DALLIX' TRESTLE POLICE

- EXTERNAL FINISHES NOTES:**
1. ALL EXISTING EXPOSED BRICK TO BE RETAINED, CLEANED AND MADE GOOD UNLESS NOTED OTHERWISE.
 2. ALL EXISTING RENDER TO BE PAINTED TO EQUAL TO No. 4 IN THE EXTERNAL FINISHES LEGEND.
 3. ALL EXISTING METAL WALLS TO BE PAINTED TO MATCH 'DALLIX' TRESTLE POLICE.

NOT FOR CONSTRUCTION

ISSUED FOR CC	J	14.04.09
NO AMENDMENT	DRW	DATE

DO NOT SCALE from this drawing. Use given dimensions only.
 Check all dimensions on the job prior to commencement of site.
 Drawings or information. Any discrepancies are to be referred to the Architect/Engineer/Designer prior to commencement of work.

High Concept Commercial
 47 Phillip Street
 Sydney NSW 2000

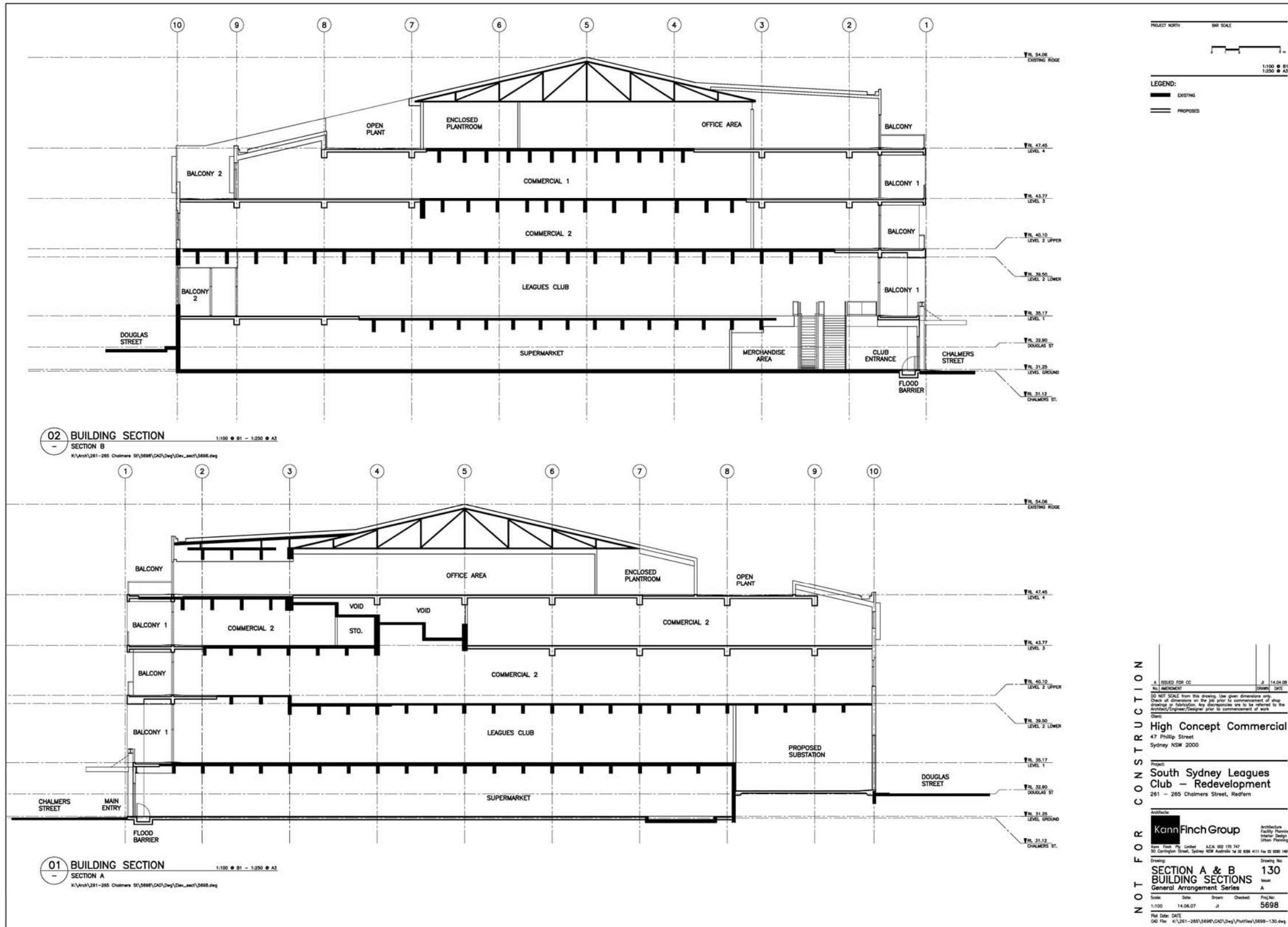
Project:
South Sydney Leagues Club - Redevelopment
 261 - 265 Chalmers Street, Redfern

Architect:
KannFinch Group
 Architecture
 Facility Planning
 Interior Design
 Urban Planning

Scale: 1:100
 Date: 14.06.07
 File: K:\Arch\261-265 Chalmers St\5698\CAD\Day\Rev\rev\5698-s.dwg

Drawing No: **121**
 Issue: **A**
 Proj No: **5698**





redfern park



Demolition works

Redfern Park

The renewal of Redfern Park is a major City of Sydney initiative to revitalise the Redfern district. Redfern Park is the spiritual home of the South Sydney Rabbitohs and the new facility will provide the team with state of the art training facilities and will also provide local residents with playing fields, parkland and community amenities.

Project Scope

The demolition is the first step in the reconstruction of the oval and grandstand and the upgrade of Redfern Park.

Key demolition elements:

- removal of all mounding and associated walls
- removal of all buildings including grandstand
- removal of seating and fencing
- removal of scoreboard
- removal of light towers
- temporary grassing

Program

Construction has commenced and completion of this stage is anticipated by December 2006.

General enquiries:

City of Sydney
David Robinson
Community Liaison Officer
Phone 0419 615 806

Garth Shayler
Project Manager
Phone 9265 9398
Fax 92659116
GPO Box 1591 Sydney NSW 2001
gshayler@cityofsydney.nsw.gov.au

city of villages



TRIVEST